

LION

SERIES

650-2200 VA

LINE INTERACTIVE UPS



HOME/OFFICE



UPS LINE
INTERACTIVE



TOWER



PLUG & PLAY



USB



LCD DISPLAY
(1200-1500-2200VA)

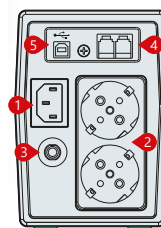


FEATURES

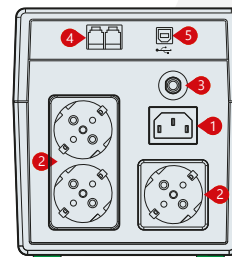
- LED Display (650-850)
- LCD Display (1200-1500-2200)
- Voltage Range, Operation Mode, Battery Charge and Load Quantity Monitoring via LCD Display (1200-1500-2200)
- Microprocessor-Based Digital Control Automatic Voltage Stabilization
- Automatic Breaker
- Frequency Adaptive
- User Friendly Alarm System
- Cold Start
- Auto Restart while AC is Recovering
- Simulated Sine Wave Output
- Intelligent Battery Management
- Short Circuit and Over Discharged Protection
- Automatically Charging Battery at UPS Off Mode
- USB Communication Port
- RJ11/RJ45 Protection

DETAILS

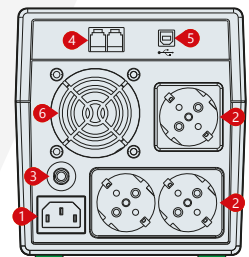
1. AC Input
2. Outlet
3. Breaker
4. RJ11/RJ45
5. USB
6. Fan



Rear Panel
650-850 VA



Rear Panel
1200-1500 VA



Rear Panel
2200 VA



MODEL					
Capacity	650VA / 390W	850VA / 510W	1200VA / 720W	1500VA / 900W	2200VA / 1320W
INPUT					
Related Voltage	230 VAC				
Voltage Range	170-280 VAC (±5%)				
Frequency	50 Hz (±%10)				
OUTPUT					
Voltage Range	220 VAC				
Voltage Precision	±10% (Battery Mode)				
Frequency	50 Hz ±%1 (Akü Modu)				
Transfer Time	2-6ms Typical, 10ms max.				
Waveform	Modified Sine Wave (Battery Mode)				
EFFICIENCY					
Line Mode	Normal Mode: >95%, AVR Mode: >88%				
Battery Mode	>60%				
BATTERY					
Battery Configuration	1 x 12V/7Ah	1 x 12V/9Ah	2 x 12V/7Ah	2 x 12V/9Ah	2 x 12V/9Ah
Charge Current	1A				
Recharge/Charging Time	6-8 hours for Recharging up to 90% Capacity				
Backup Time	~16 min.	~20 min.	~30 min.	~50 min.	~50 min.
PROTECTION					
Full Protection	Overload, Short Circuit, Battery Charge-Discharge Protection				
INDICATION					
Display	LED		LCD		
ALARM					
Battery Mode	Sounding every 10 seconds				
Low Battery	Sounding every 1 seconds				
Overload	Sounding every 0,5 seconds				
Fault	Continuously Sounding				
ENVIRONMENTAL					
Operating Temperature	0 ~ 40°C				
Storage Temperature	-20°C ~ 55°C				
Relative Humidity	0 - 95°C (Non Condensing)				
Audible Noise (at 1m)	≤40 dB				
COMMUNICATION					
Communication Port	USB				
Software	Windows Family / Linux / Mac				
DIMENSIONS & WEIGHT	650VA	850VA	1200VA	1500VA	2200VA
Dimensions WxDxH (mm)	101 x 298 x 142		150 x 353 x 162		
Packaging Dimensions WxDxH (mm)	142 x 332 x 213		192 x 405 x 235		

Elektroiz reserves the right to change or modify product design, construction, specifications, or materials without prior notice and without incurring any obligation to make such changes and modifications on Elektroiz products previously or subsequently sold. Elektroiz does not guarantee the items of the accuracy and completeness.